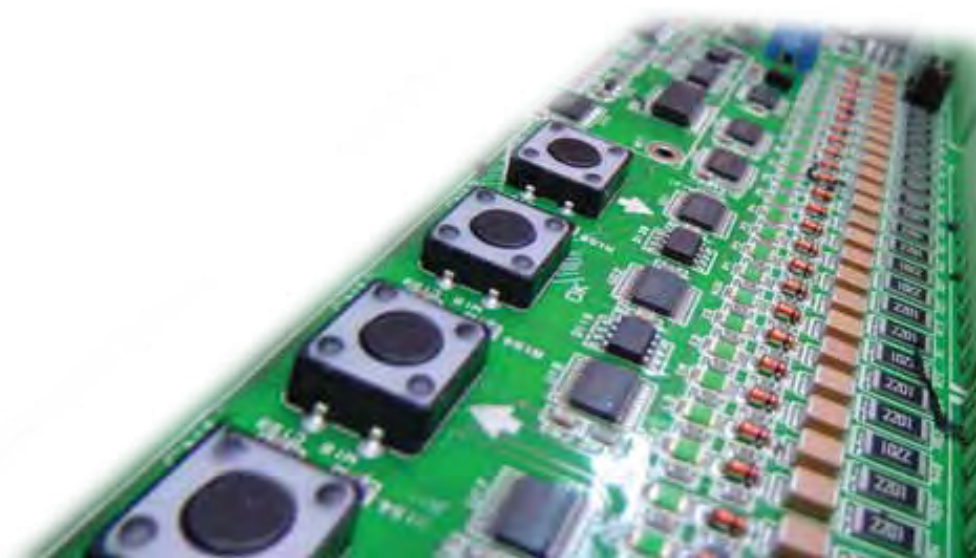


Elfo

new microprocessor control board



elevatori premontati s.r.l.

Product updates

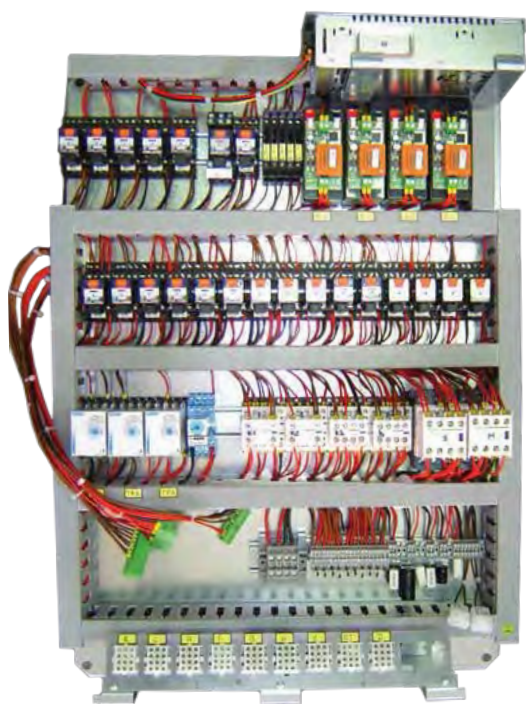
EP constantly updates its products making them complying to regulations, according to customers demands and following the suggestions of our employees who, working on construction sites, highlight the critical points they find.

Improvements of units are possible due to the constant work of the Research & Development (R&D) Department and **EP** Technical Office.

The Elfo with the microprocessor control board

Three years ago we listed the features and specifications that the drive board should have had for the Elfo lifting platform taking into account the experience gained in 20 years of relay control panels installed on thousands of machines all over the 5 continents.

To find a single commercial product that would meet our requests and needs was not an easy task and for this reason it was decided to start an ambitious project: to developed our own drive board.



Old control panel



New control panel



Sede legale

Via Querceto, 27 59100 Prato Italy



Reg. Imprese di Prato Cod. Fisc. e P.IVA 01129050470

Sede Operativa

Via della Pavoncella, 12 56019 Vecchiano (PI) Italy



Tel +39 050 875091 Fax +39 050 8750928

www.elevatoripremontati.it - info@elevatoripremontati.it



elevatori premontati s.r.l.

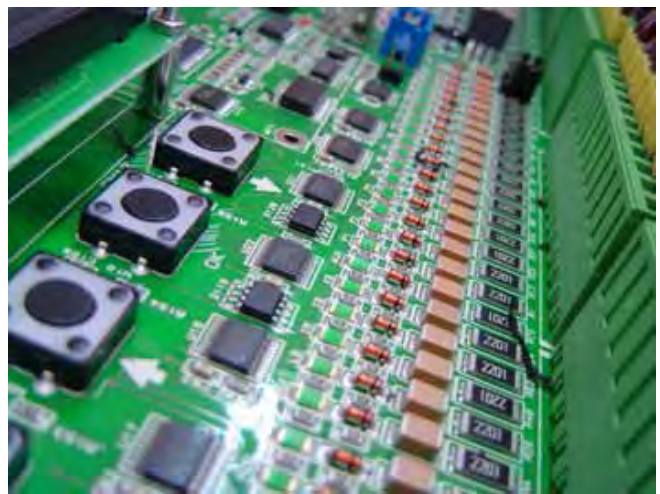
After three years of hard work we are glad to present our customers the new **Elfo** control board based on the drive board entirely developed by **EP** together with its suppliers focusing on our needs.

The use of a new control board, offer us advantages in terms of size and functionality and at the same time simplifies installation and maintenance.

The smaller size compared to the previous one and the inferior number of components used (fewer components and less cabling) already makes it more reliable.



detail of connections in the old control board



new microprocessor control board

As per the project specification this new control board can handle all types of units so far realized by **EP**.

- automatic or manual operation from the landings
- hold-to-run operation without car doors
- automatic operation with automatic car doors (sliding or folding)
- hold-to-run operation with open manual folding doors and automatic operation with closed manual folding doors



Sede legale

Via Querceto, 27 59100 Prato Italy



Reg. Imprese di Prato Cod. Fisc. e P.IVA 01129050470

Sede Operativa

Via della Pavoncella, 12 56019 Vecchiano (PI) Italy

Tel +39 050 875091 Fax +39 050 8750928

www.elevatoripremontati.it - info@elevatoripremontati.it



elevatori premontati s.r.l.

Benefits during installation and maintenance

1 Thanks to the presence of a microcontroller, most part of the electrical panel customizations can be made by operating in the software. Only for a minor part is requested to operate in the hardware. Varying the single programming of the parameters of the board and the kit shaft information (i.e. the number of magnetic sensors) can be realized:

- standard unit (4 monostables)
- close-up landings (5 monostables)
- double speed unit (4 monostables)
- false floor (4 monostables)
- dual-zone repechage (5 monostables)

A **simplification** of the electrical part and a considerable reduction **in assembly times** has been obtained.

The number of bistables used by the old control panel was high and increased with each increasing of stops numbers or optional features. Instead with the new control board you use only a few (4 for standard units and a maximum of 5 in the case of special units) monostables (simplification in the positioning of magnets).

Stops	Relay control board	New control board
2	6 bistables	4 monostables
3	8 bistables	
4	10 bistables	
5	12 bistables	

2 FALSE PIT when activated it disables the calling and you need to reset the panel (board). This means greater safety for the maintainer

3 With the board we obtained a simplification in the regulation of the safety zone. This results in less time of installation needed.

4 The microprocessor control board is provided with a diagnostics section and a historical errors list. This offers greater simplicity and rapidity of action in case of emergency and reduction of maintenance time during periodic checks.



Sede legale

Via Querceto, 27 59100 Prato Italy



Reg. Imprese di Prato Cod. Fisc. e P.IVA. 01129050470

Sede Operativa

Via della Pavoncella, 12 56019 Vecchiano (PI) Italy



Tel +39 050 875091 Fax +39 050 8750928

www.elevatoripremontati.it - info@elevatoripremontati.it



elevatori premontati s.r.l.